

License & Support

Read the license text file on the CD-ROM. By using the software you agree on the license terms.

Support information is available at the following location:
<http://www.inesinc.com/support>



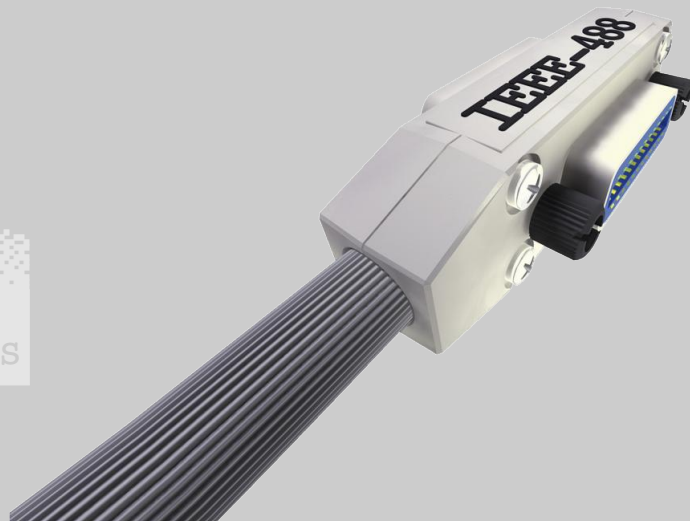
INES Test and Measurement (Germany)
www.inesinc.com • info@inesinc.com
Phone +49 5723 916250
Fax +49 5723 916252

Microsoft® and Windows® are registered trademarks or trademarks of Microsoft Corporation in the United States and/or other countries. Product and company names listed are registered trademarks, trademarks or trade names of their respective companies. Our continual product improvement makes specifications subject to change without notice. © 2004, 2006.

100169-00

Getting Started

How to install your ines GPIB interface



Introduction

This booklet is a quick installation guide for an ines GPIB plug-and-play interface for Microsoft® Windows® 2000, XP and Vista.

For a more detailed description of the installation, non-standard installations, non-plug-and-play-cards, or other operating systems see the manual on the CD-ROM included.

Installation

Always follow the instructions of the computer manufacturer for the installation of add-on components.

- *Card* - Insert the card into a free slot.
- *USB adaptor* - Plug the adaptor cable into a free USB port.
- Turn on the computer and start Windows.
- Windows recognizes the new hardware.
- Insert the installation CD-ROM into your CD-ROM drive.
- Let the Hardware Wizard search for a driver and choose CD-ROM as source.
- After the Hardware Wizard has finished, run *setup* from the installation CD-ROM. Follow the instructions of *setup*.
- Click Start/Programs/INES-488.2/Welcome for the next steps.